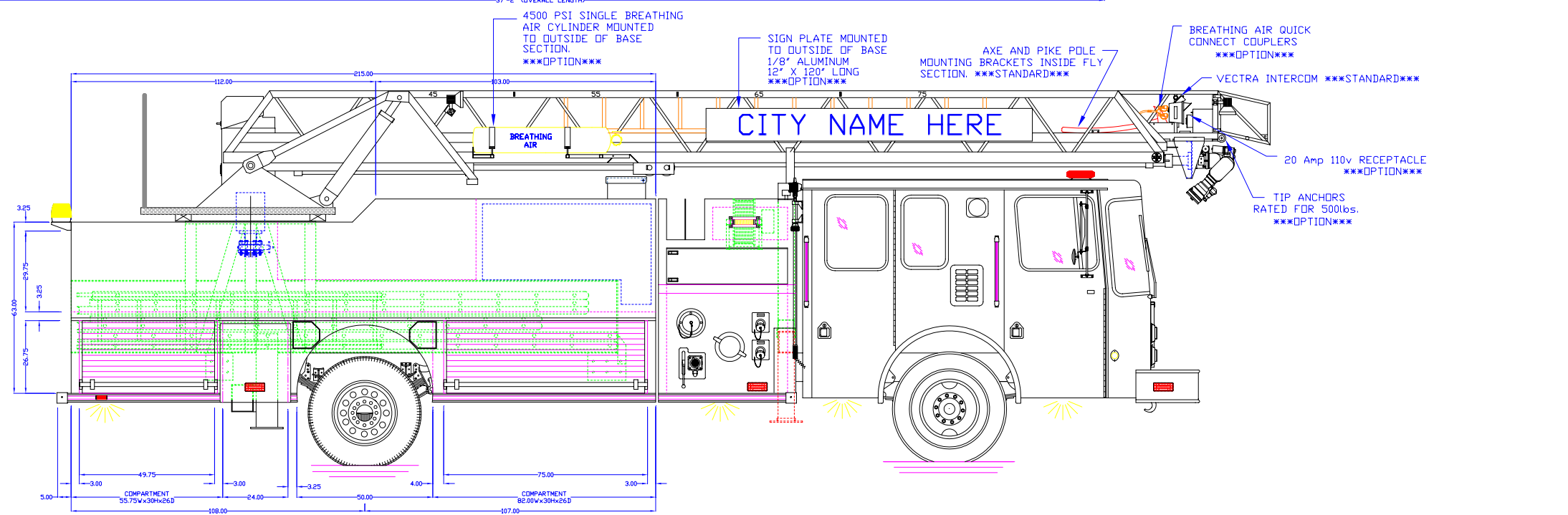
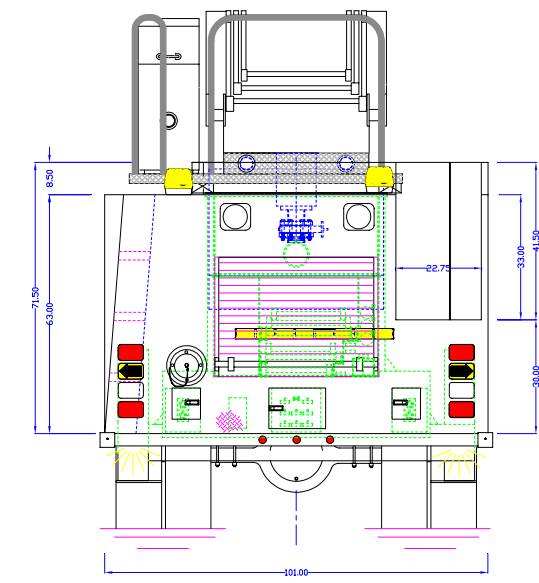
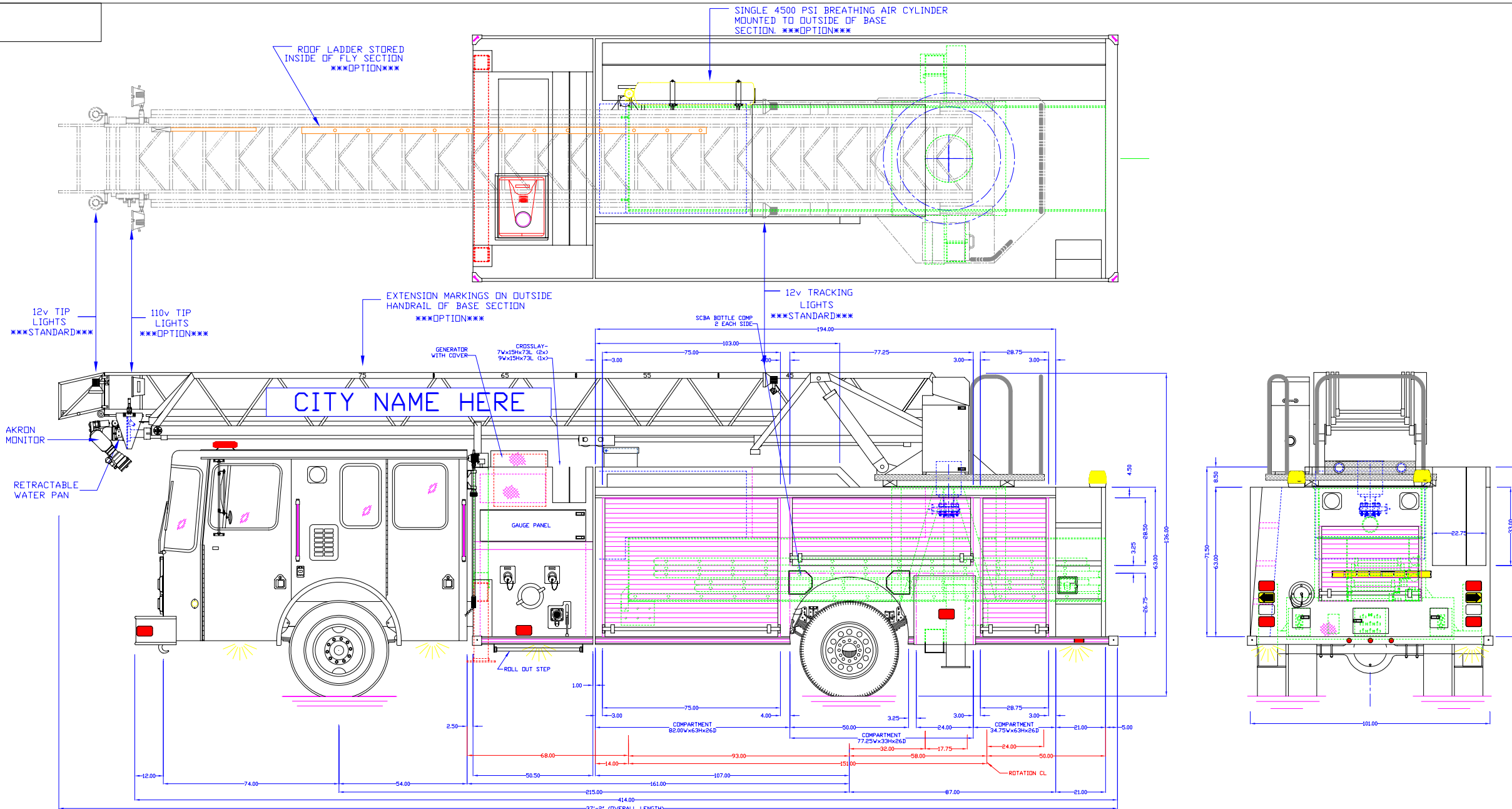
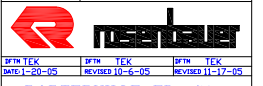


APPROVED BY:



NOTE LADDER- 75' RK MFG
 TANK CAP- 300 GAL POLYPROPYLENE
 PUMP CAP- 1500 GPM
 DIMENSIONS SHOWN ARE APPROXIMATE AND ARE SUBJECT TO MINOR DEVIATIONS DURING CONSTRUCTION
 NOT ALL ITEMS IN SPECS ARE SHOWN ON THIS PRINT
 COMPARTMENT INTERIORS SPATTER PAINT
 BODY TO BE CONSTRUCTED OF 3/16\"/>

136"	MAXIMUM HEIGHT
36' 6"	MAXIMUM LENGTH
101"	BODY WIDTH



DATE: 1-20-05
 REVISIONS: 10-6-05
 REVISION: 11-17-05
 PORTERVILLE FD, CA

SCALE: REF. ONLY